

Chris Klonowski – Wireline Mgn.
(724-859-7373)

Mike Miles – Casedhole Eng.
(724-388-8839)

Marty Comini – VP Ops.
(412-260-9040)

Ron Miles – Wireline Sales
(814) 762-4859

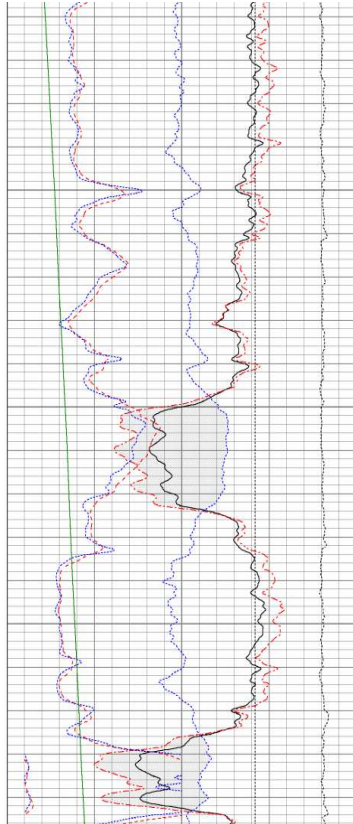
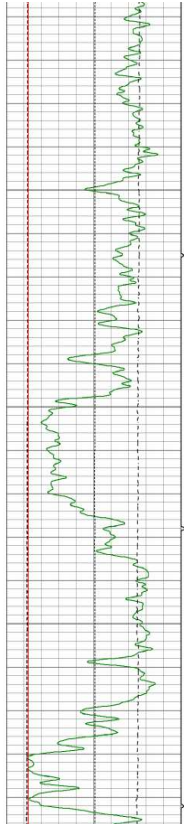
Operation Location: 15771 Olean Trail, Strattanville, PA 15139 (Corsica Shop)

Equipment & Service Description

- 1) **Description:** 3 Complete Wireline Units setup to run Openhole and Casedhole Services. With 2 additional Wireline units in yard. Equipment was built and designed to handle the terrain of the Appalachian's, and the specific needs of the Energy business.
- 2) **Safety:** ATF & NRC Licenses for all operating States. Registered with ISNetworld with a "A" rating. OOSH 300A forms with ZERO incidents since conception (Sept. 2014). All training and safety audits up to date. All Wireline Engineers & Managers have their PA-Blaster Lic.
- 3) **Personal:** Keystone Wireline staff has many years of field, sales, and management experience dealing with all aspects of wireline work, including Plug-n-Abandonment, Openhole, Casedhole, Cavern, and Porosity storage operations. The team has between 20 plus years of experience for each individual in the wireline industry, making the staff experience leader in the industry.



Openhole Services:



Sensor	Offset (ft)	Schematic	Description	Len (ft)	OD (in)	Wt (lb)
GR	33.29		GR-PSI (780)	2.02	3.38	40.00
CNLSC	29.21		CNT-PSISH (160)	5.00	3.38	55.00
CNSSC	28.71					
			CDL-PSI (161)	8.50	4.00	285.00
LSD	20.46					
DCAL	20.46					
SSD	19.68					
RLL3	16.17					
			DIL-PSI (213)	18.79	3.75	175.00
CILD	6.08					
CILM	4.71					
TEMP	0.25					
SP	0.00					

Dataset: howar drilling lot 386 #53 2-17-17 db: field/wellrun1/merge4
Total Length: 35.21 ft
Total Weight: 555.00 lb
O.D.: 4.00 in

GAMMA-RAY

COMPENSATED NEUTRON

COMPENSATED DENSITY

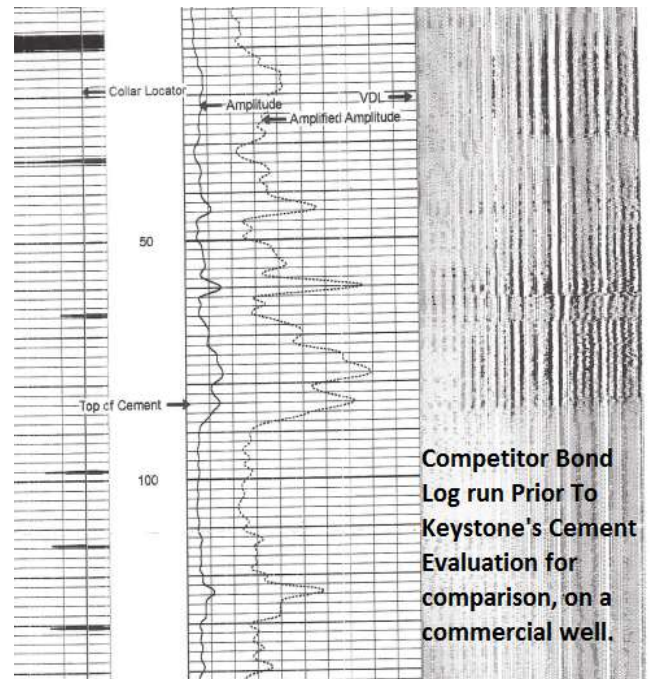
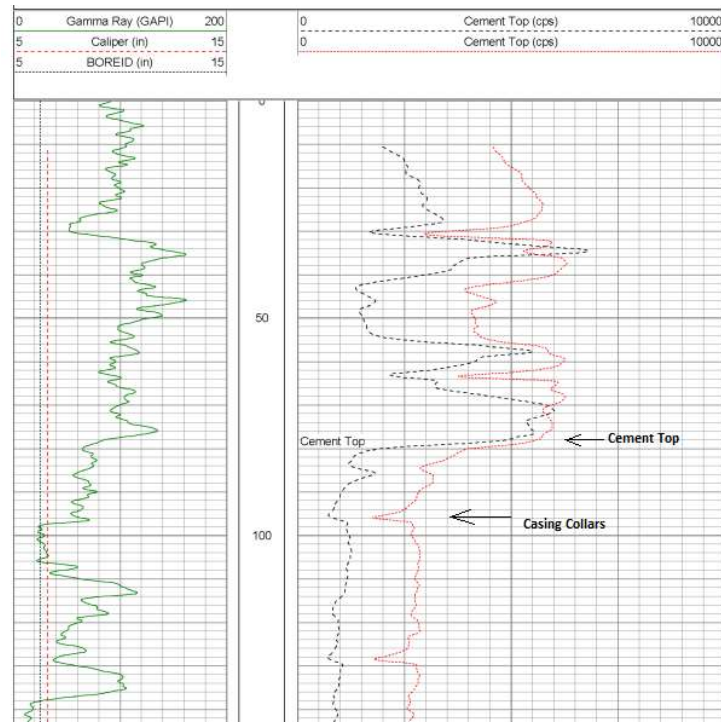
DUAL INDUCTION

TEMPERATURE

CALIPER

CEMENT EVALUATION (AIRHOLE OR FLUID – see next page)

KEYSTONE Patent Technology:
Log Examples: Airhole Cement Evaluation Log in 7" CSG

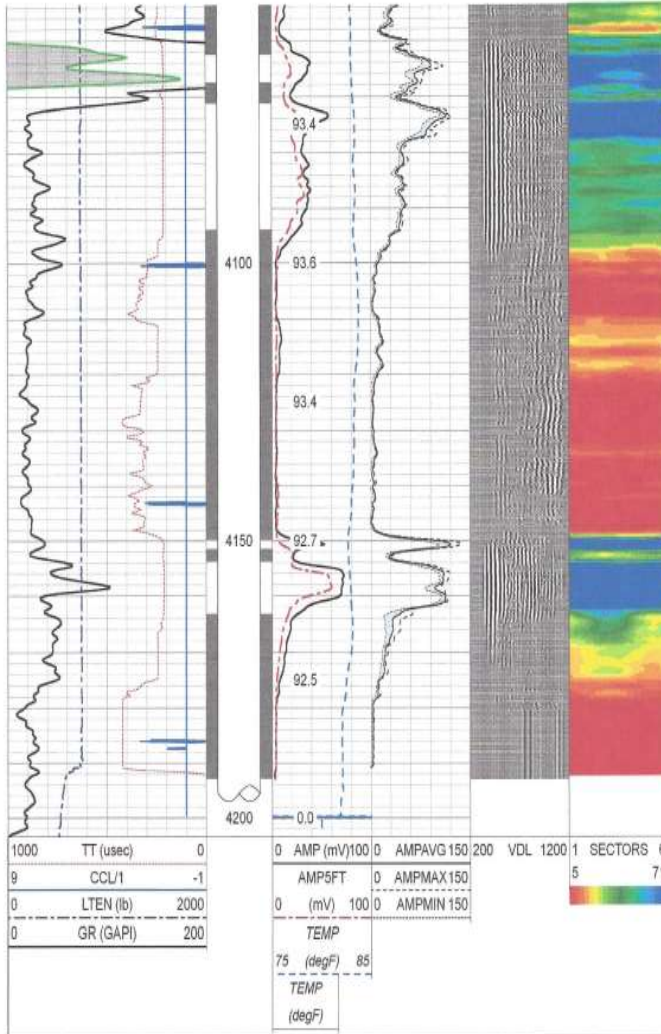


Logging string: GR – Compensated Density – Density Caliper (12ft – length; 3-5/8" Dia.)

Source: Cesium 137 (2 Ci)

- **Technology is STATE APPROVED**
- State requires TOC log if cement is not circulated back to surface on the backside

Cased Hole Services:



Sensor	Offset (ft)	Schematic	Description	Len (ft)	O.D. (in)	Wt (lb)
			SDSCHD Applied 1.88 Calichead	1.00	1.45	5.00
			SDSCENT Probe Snapping Centralizer	2.92	2.75	20.00
TEMP	14.00					
WVFCAL	13.33					
WVFS1	12.58					
WVFS2	12.58					
WVFS3	12.58					
WVFS4	12.58					
WVFS5	12.58					
WVFS6	12.58					
WVFS7	11.83					
WVFS8	10.83					
			SCBLTEKSLIM-Titan (RBB, 112) Teco 1.89 Rotar Bond Tool with Temp	9.75	1.80	63.00
WVTEMP	7.50					
			SDSCENT Probe Snapping Centralizer	2.92	2.75	20.00
CCL	3.71					
			GR-Probe (275) Probe 2.75" 4 Channel Probe	4.58	2.75	40.00
GR	0.75					
Dataset: TEKCO 1 1/16" Sector Bond with Temp Total Length: 21.17 ft Total Weight: 148.00 lb O.D.: 2.75 in						

Radial Cement BOND LOG – GR – CCL – Junk Basket / Gauge Ring

1-3/8" 3-Arm Caliper

PERFORATIONS – Cut Pipe

PLUG SETTING

GasGun